



Emigrant Trail 12 miles East of Strawberry



Burst Rock 12 miles East of Strawberry

East Flange Rock

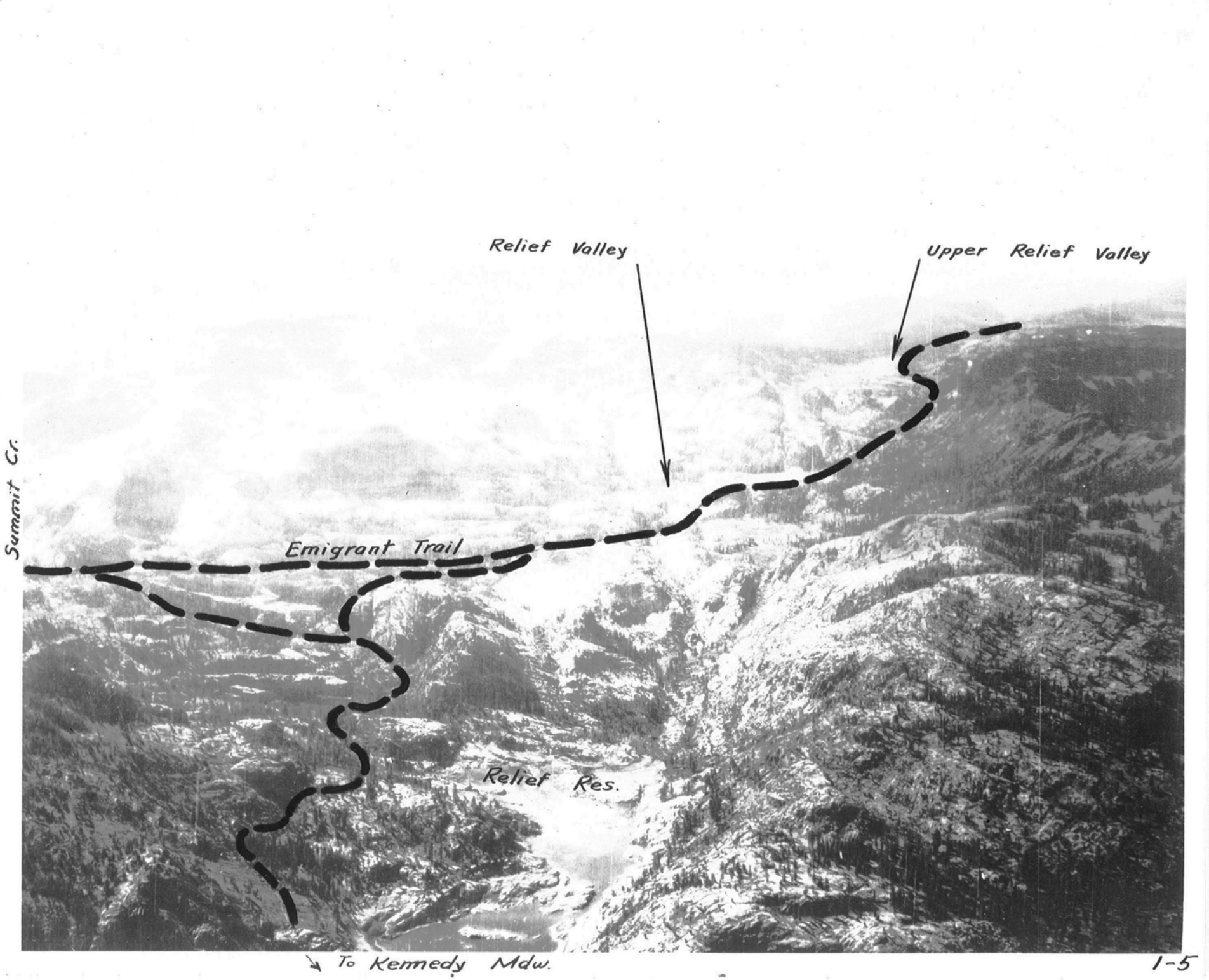
Powell Lake

THE THREE CHIMNEYS

From Emigrant Trail looking North to ~~East Flange Rock~~ - Powell Lake in foreground



Emigrant Trail blaze between Upper & Lower Relief Valleys



Summit Cr.

Relief Valley

Upper Relief Valley

Emigrant Trail

Relief Res.

To Kennedy Mdw.



Lower Relief Valley

Junction of
Relief Creek and
Summit Creek

Emigrant Trail - Confluence of Summit Cr. & Relief Cr.



Emigrant Trail on Summit Creek



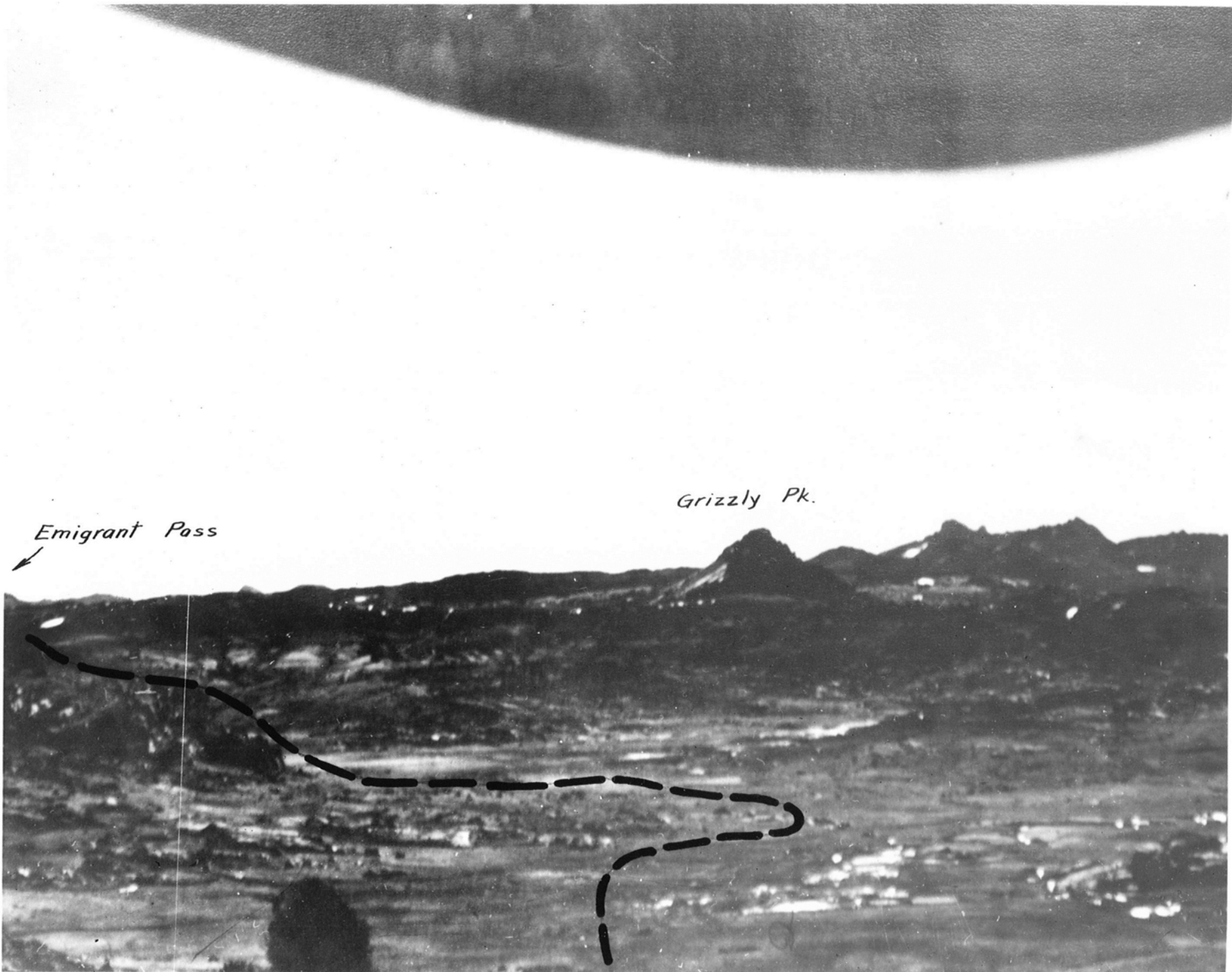
Emigrant Trail down Summit Creek looking West from Breccia Pass



Breccia Pass

Emigrant Trail over Breccia Pass

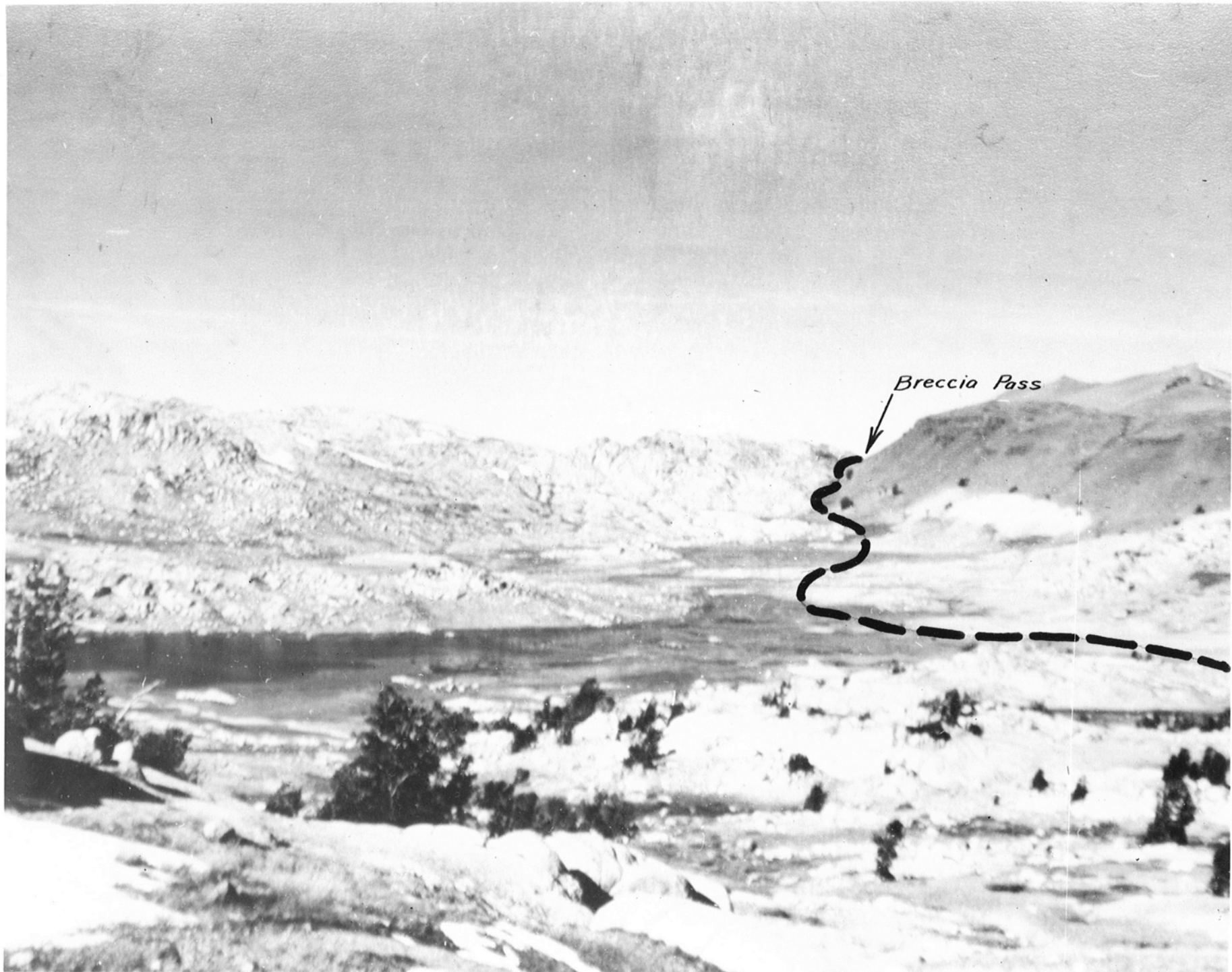
El. 9850'



Emigrant Pass

Grizzly Pk.

Ely Emigrant Mdw. & Emigrant Trail from Breccia Pass



Breccia Pass

© D.R.S. 1952

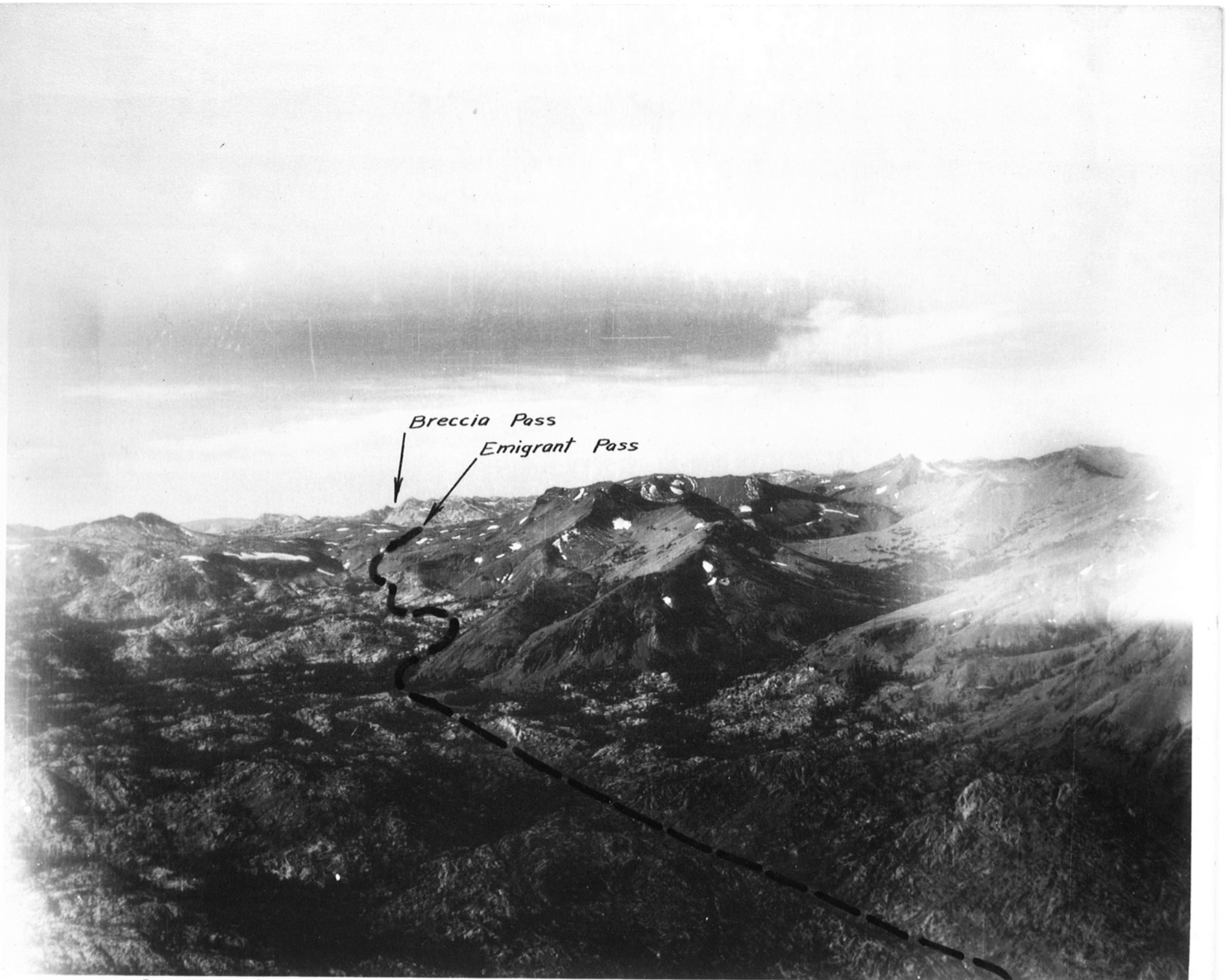


East

Emigrant Pass

El. 9733'

1-12



Breccia Pass
Emigrant Pass

Southwest up West Walker - Emigrant Trail



↑ To Piute Pass

↑ Piute Trail

↓ To Kennedy Lake

1-A-1

East Flange Rock
↓

SWly down Deadman Creek - Sonora Mono Road ↘ To Sonora Pass 2-1



Ford below Bridge over Middle Fork Stanislaus River

Sonora Trail



Sonora Trail Crossing Middle Fork Stanislaus River 1/4 mile below junction of Clark Fork



Iceberg Mdw.

Iceberg Mdw lower center Looking East up Clark Fork Sonora Trail 3-3

Leavitt Pk.

St. Marys Pass

Lake

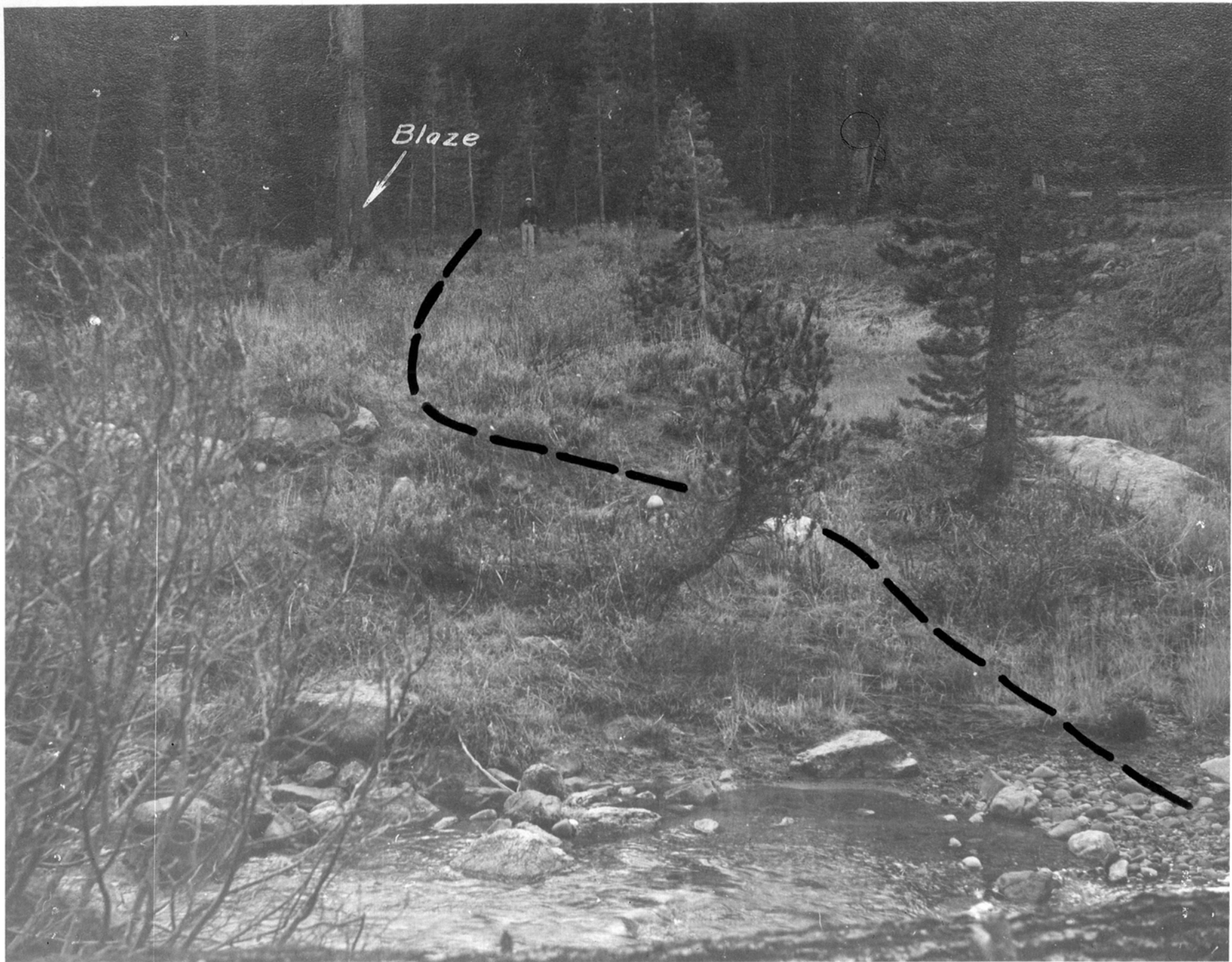
Trail Blazes

River Crossing

Looking East up Clark Fork above Iceberg Mdw. - St. Marys Pass (western summit) in upper left 3-4



Sonora Trail between Iceberg Mdw and Boulder Creek on Clark Fork



Crossing of Clark Fork from North side looking South - Blazed tree - El. 8280' 3-6



Sonora Trail blazes between Lake and River Crossing

El. 9060'



Looking East from South end small lake - Blazed tree on right



Blaze

Looking Westerly across South end of small Lake

El. 9420'

3-9



Lake

Looking Westerly from between St. Marys Pass (Western Summit) and Lake El. 9725' 3-10



PANORAMA with photo no. 10

El. 9725'



Clark Fork Mdw.



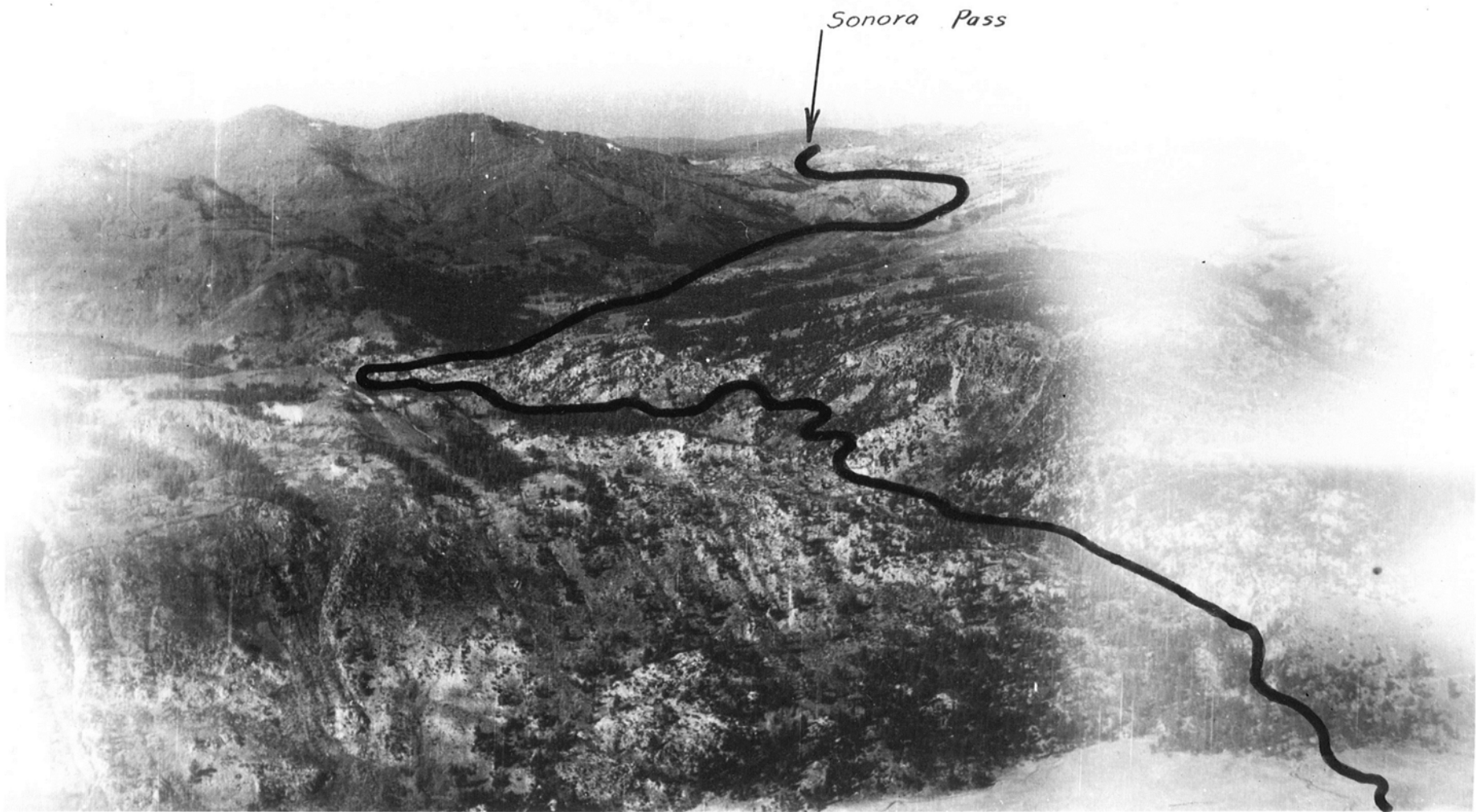
St. Marys Pass
(Western Summit)

Looking Northeast, St. Marys Pass lower left, Clark Fork across center



Sonora Pass

Looking Northwest up Leavitt Creek and Highway 108



Sonora Pass

Leavitt Meadow (Looking NWly) Highway 108

3-17



Sonora Pass

Sonora Pass from St. Marys Pass (Western Summit)



St. Marys Pass - Looking East - Brewer's Western Summit - El. 10,150' 3-13



Looking Northeast - Small Valley between Sonora Pass and St. Marys Pass (Western Summit), Sonora Peak in background 3-14