

WALTER CASTLE

on

P. G. & E.

in

TUOLUMNE COUNTY

by

Richard L. Dyer

July-August, 1973

A Tape Recorded Interview



Walter Castle on
P. G. & E. in
Tuolumne County

TAPE #1, Side A

TOPICS INTRODUCED

Biographical Notes (July 31, 1973)

Parents
Brothers & Sisters
Vital Information
First Job

Employed by P. G. & E., 1919

Sierra & San Francisco Power Company (Aug. 2, 1973)

General Construction, P. G. & E.

Line Crews-

Permanent Camps along Stanislaus River
Special Positions (Jobs)
Source of Laborers
Wildlife
Working Conditions

Line Foreman

Side B

Line Foreman (Cont'd)

Field Foreman

Working Conditions and Power Developments

Spring Gap Power Plant
Phoenix Power Plant
Electricity for Mines
Working on the Flume

Identification of Flume
Tractor Transportation on Flume
Lumber Supplies
Blacksmith
Maintaining the Flume
Flume Accident

Walter Castle on
P. G. & E. in
Tuolumne County

TAPE #2, Side A

TOPICS INTRODUCED

Flume Accident (Cont'd)

Depression Years (1930's)

Wages

Working Conditions

World War II Years (1940's)

Tunnel Replaces Flume

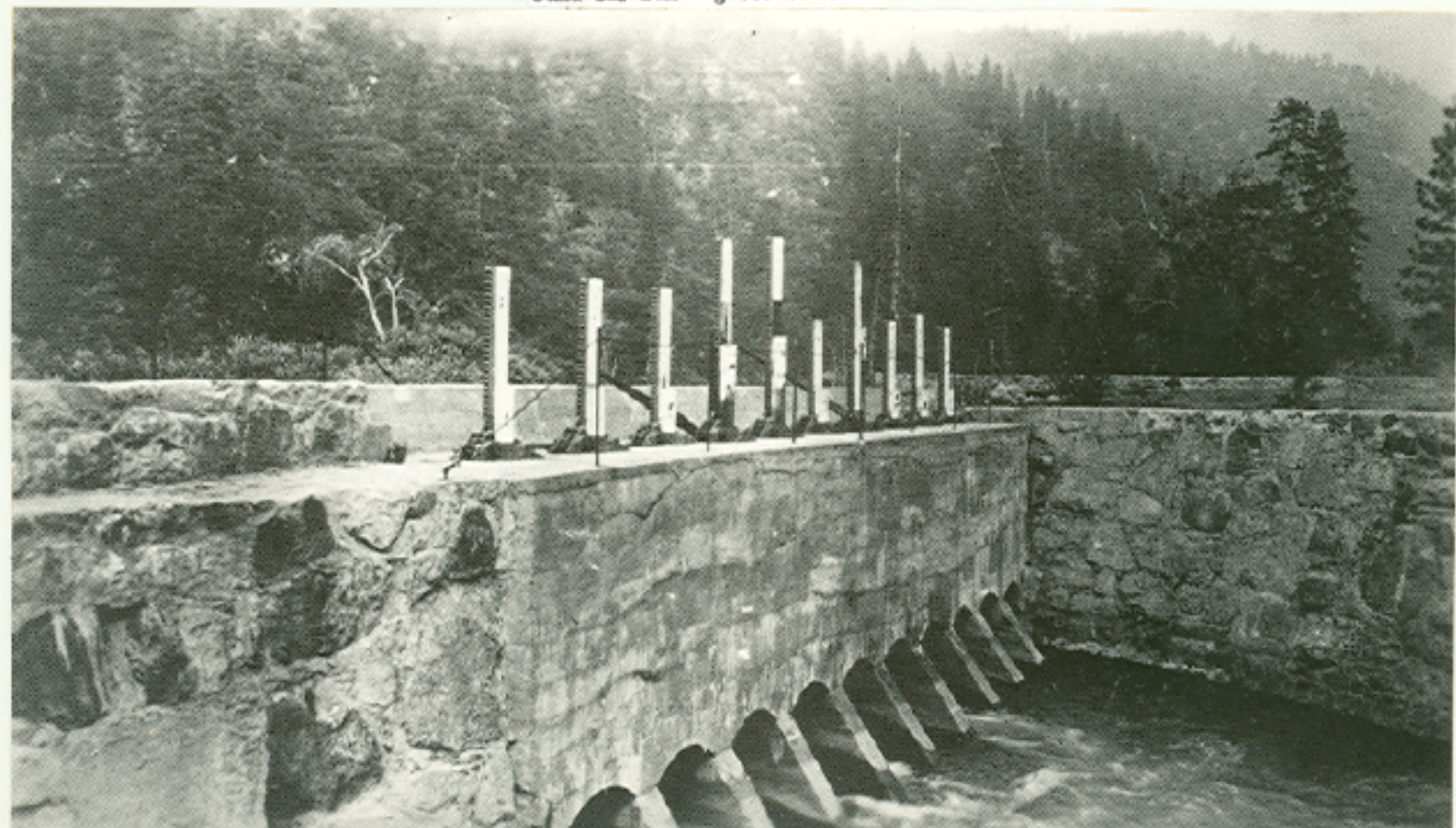
Construction Changes since World War II

Retirement, 1966

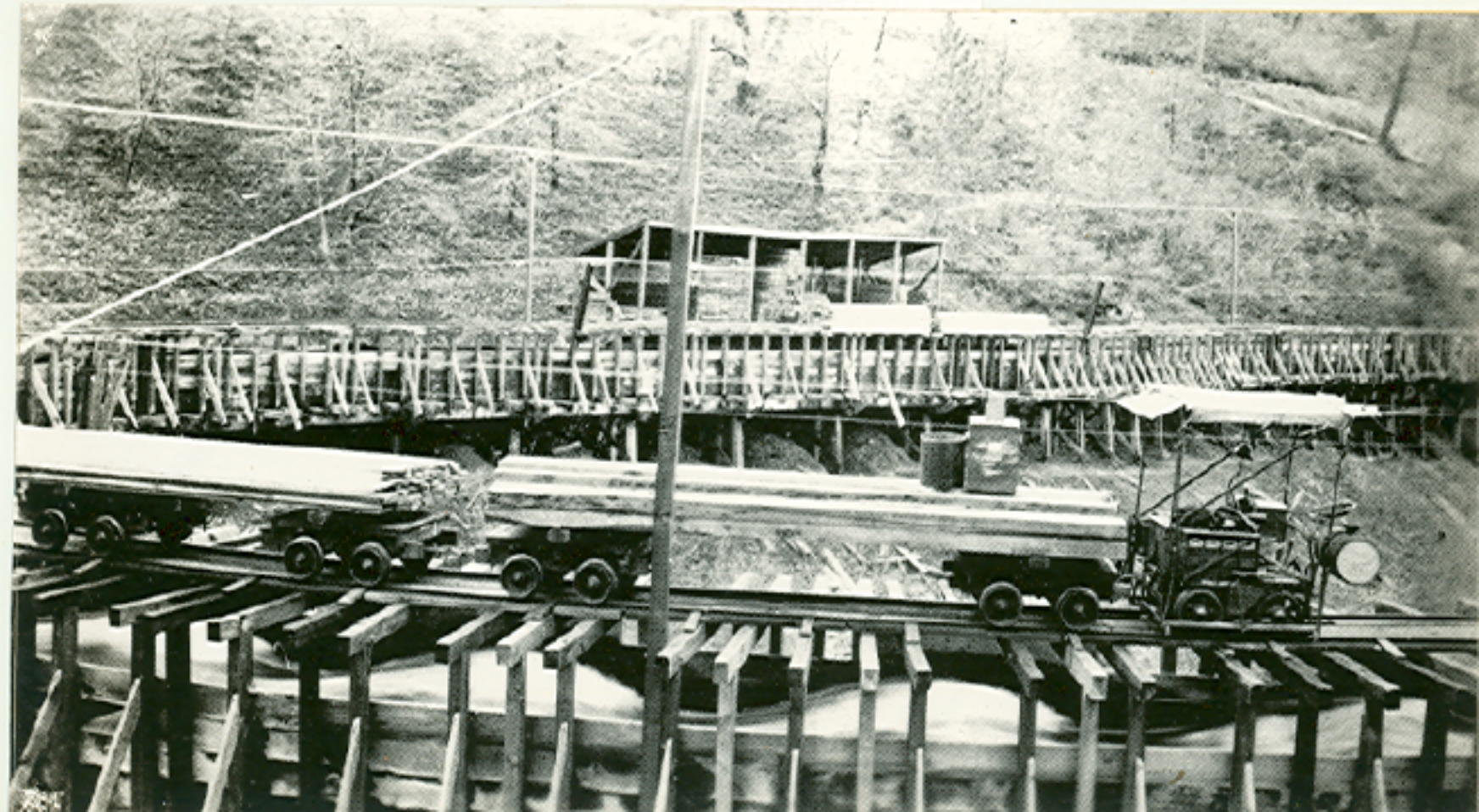
Permission to use Tape



Sand Bar Dam - gates to fiume



battery operated tractor on flume



Ford tractor on tiemo



